





SKU: SG5402

-  VOLT Ball Flow Indicator
-  VOLT Kugelflussanzeige
-  VOLT Indicador de flujo de la bola
-  VOLT Balle Indicateur de débit

Valves[™]
O N L I N E

- 1/4" - 1 1/2" Stainless Steel Sight Flow Indicator
- 1/4" - 1 1/2" Edelstahl Sichtdurchflussanzeige
- 1/4" - 1 1/2" Indicador visual de flujo de acero inoxidable
- 1/4" - 1 1/2" Acier inoxydable Sight Indicateur de débit

Stainless Steel Ball Flow Sight Indicator



- High quality robust design
- Pressures up to 16 bar
- Temperatures up to 200°C
- Screwed BSP (NPT Option)
- Designed and manufactured in the UK

The 'Ball Type Sight Glass' is a domed top 316 stainless steel indicator that can be used on pipe sizes from 1/4" to 1 1/2" (8mm to 40mm). The PTFE ball rises in its dome when flow commences and is clearly visible from distances. The indicator must be installed horizontally with the glass dome in the upwards position.



Description

This sight flow indicator is ideal for you to visually check the flow, presence, colour and condition of a liquid, gas or condensate.



Beschreibung

Diese Sight Flow Indikator ist ideal für die visuelle Kontrolle der Durchfluss, Präsenz, Farbe und Zustand einer Flüssigkeit, Gas oder Kondensat.



Descripción

Este indicador visual de flujo es ideal para que usted pueda comprobar visualmente el flujo, la presencia, el color y el estado de un líquido, gas o condensado.



Description





Cet indicateur de flux de vue est idéal pour vous de vérifier visuellement l'écoulement, la présence, la couleur et l'état d'un liquide, de gaz ou de condensat.

Quality

This indicators is manufactured in the United Kingdom to the highest standards. The quality system is independently audited by BSI and certified to ISO 9001. Full material traceability is maintained, material and pressure test certificates can be supplied upon request.



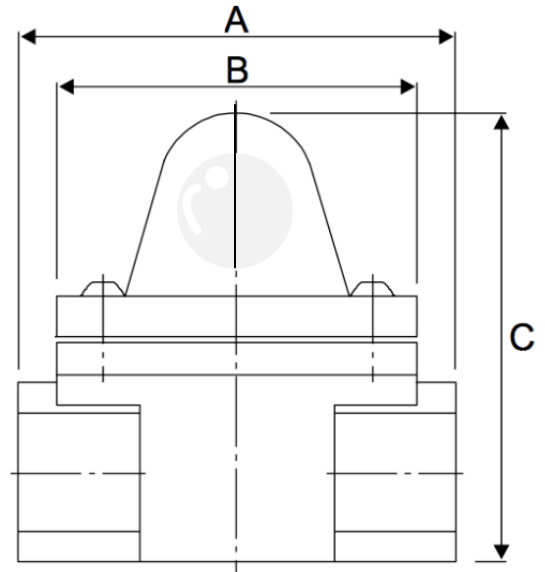
MADE IN BRITAN

-  VOLT Ball Flow Indicator
-  VOLT Kugelflussanzeige
-  VOLT Indicador de flujo de la bola
-  VOLT Balle Indicateur de débit

Sight Flow Indicator

- High quality robust design
- Pressures up to 16 bar
- Temperatures up to 200°C
- Short lead times
- Designed and manufactured in the UK

Dimensions					
Bore Size mm (inch)	Weight (kg)	Overall Length 'A' (mm)	Width (Clamp) 'B' (mm)	Overall Height 'C' (m)	
8 1/4"	0.72	76	60	81	
10 3/8"	0.7	76	60	81	
15 1/2"	0.65	76	60	81	
20 3/4"	1.35	89	60	100	
25 1"	1.25	89	60	100	
40 1 1/2"	2.5	118	70	126	



Flow Requirements				
Size (mm)	Maximum Flow (l/min)	Out of Socket (l/min)	Pressure Drop 2m / sec (BAR)	
8	0.3	1.5	0.1	
10	0.3	1.5	0.1	
15	0.3	1.5	0.1	
20	2.5	5	0.2	
25	4	8	0.2	
40	11	23	0.3	

Construction

The bodies are cast in high quality 316 stainless steel. The glass window is held in place by a stainless steel clamp ring and sealed with a Viton O-ring, giving superior protection. The sight glasses can be supplied with screwed connections to BSP parallel or taper and NPT

Materials of Construction

Body	Stainless steel ASTM 351 CF8M
Clamp Ring	Stainles Steel BS3100 302 C25 (304 C15)
Ball	PTFE
Glass dome	Annealed Borosilicate
O-Ring	Viton
Gasket	Klingsil C4400
Fastners	Stainless Steel

Applications Include

Showing the presence of condensate in steam return lines

Indicating chemical dosing on water treatment plant

Ensuring that flow of cooling water is maintained to specialised equipment

Detecting changes in colour and condition of liquids during processing